

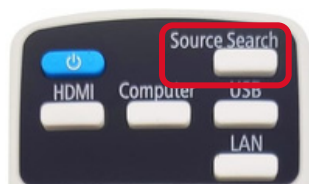


## A - Presentation Mode

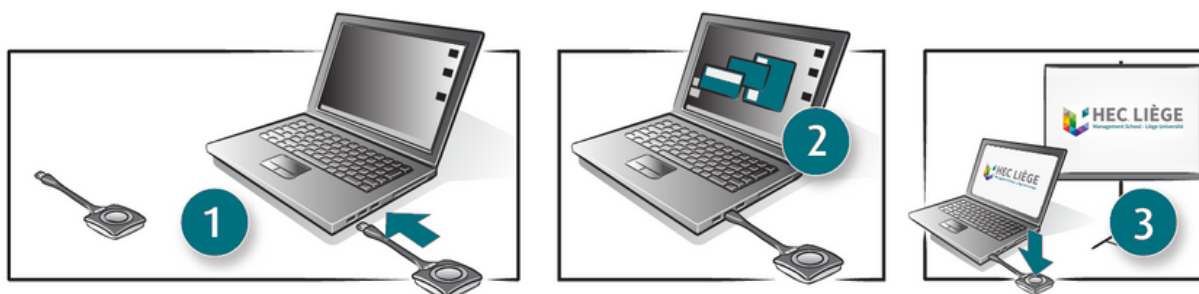
### 1. Turn on the projector



### 2. Select HDMI 1 source (or click on "Source Search")

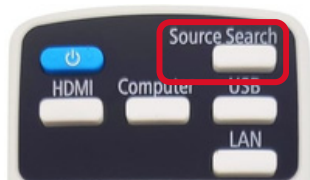


### 3. Insert the dongle into your computer and push on the button



## B - Videoconference Mode

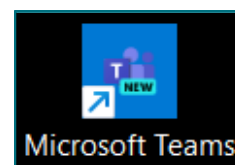
### 1. Select HDMI 2 source (or click on "Source Search")



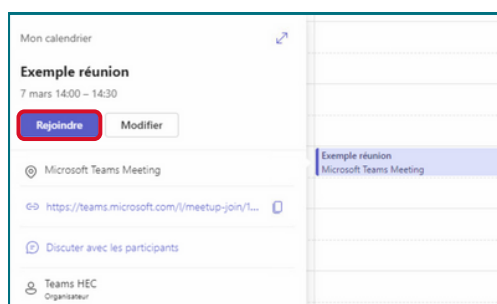
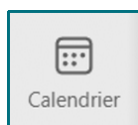
### 2. Use the keyboard to navigate



### 3. Open Microsoft Teams (On the computer desktop)



### 4. Open the Calendar tab and click on the desired meeting to join it

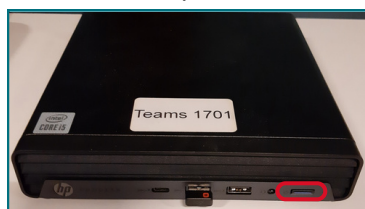


Note: For the meeting to appear in the calendar, you need to invite the email address:  
**teams.hec.069@uliege.be**

## C - Troubleshooting

### No source on HDMI 2 ?

Check if the computer is turned on



### Keyboard is not working ?

Check if it is turned on (switch on top)

