

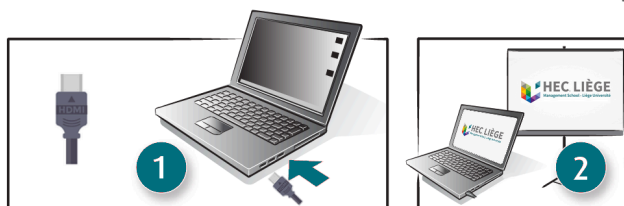


A - Presentation Mode

1. Turn on the screen (button at the bottom right).



2. Insert the HDMI cable near the screen in your computer.



3. Change the source

- a. Click on the pencil icon

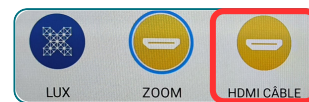


(On the left side of the screen)

- b. Click on the HDMI icon



- c. Click on the "HDMI CABLE" button



(In the menu at the center of the screen)

B - Multiple display on others TV



1. Turn on the desired number of TVs (1, 2 or 3) with the remote control.

Check if the power plug is properly plugged into the power strip under the table).

2. Automatically the teacher screen is sent on the TVs.

To switch between the teacher's screen and your own TV screen, use the remote control.

HDMI ① ↔ Your screen

HDMI ② ↔ Teacher screen

- To select the HDMI input, simply press the yellow button with the letter C.



C - Sound in the room

Check in your computer if the correct output device is selected = *hdmi_extender*